


November 8, 2019

Implementation of EPAs @ Program Level

Sally Ann Mitchell, EdD, MMSc
 Assistant Professor of Clinical Anesthesia
 Vice Chair of Education
 Indiana University School of Medicine | Department of Anesthesia



1

Disclosures

None – financial or otherwise

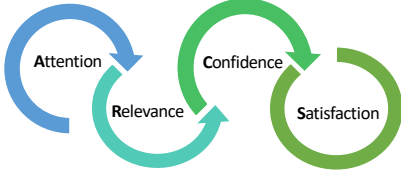
2

Learning Objectives

- Describe Keller’s ARCS model of motivational instructional design
- Apply ARCS model to implementation of EPAs
- List outcomes of instruction for ARCS and instruments used to measure these constructs
- Understand challenges, barriers, and successes of the implementation process - early findings

3

Keller’s ARCS model of motivational instructional design

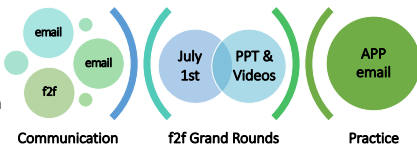


Apply ARCS model to implementation of EPAs

4

ATTENTION


- Methods for grabbing the learners’ attention include
- Perceptual arousal
- Inquiry arousal
- Humor
- Active participation



5

RELEVANCE

- Use concrete examples with which learners are familiar
- Experience
- Needs Matching
- Present Worth
- Future Usefulness



6

RELEVANCE

- Use concrete examples with which learners are familiar

Experience
Needs Matching
Present Worth
Future Usefulness

7

CONFIDENCE

- Help students understand opportunities for success
- Provide objectives and prerequisites
- Give learners control
- Provide feedback

8

SATISFACTION

- Learning must be rewarding or satisfying
- Intrinsic reinforcement + Extrinsic rewards = ROI
- Provide immediate application opportunities

9

Outcomes of instruction with ARCS

Instruments used to measure these constructs

10

Effort

myTIPreport

Faculty = 100; 73; 56
Residents = 78; 76

Category	Count
TOTAL	308
CURRENTLY OPEN	12
COMPLETED	226
COMPLETED WITHIN 4 DAYS	172
COMPLETED WITHIN 2 WEEKS	226
EXPIRED	63
DECLINED	7

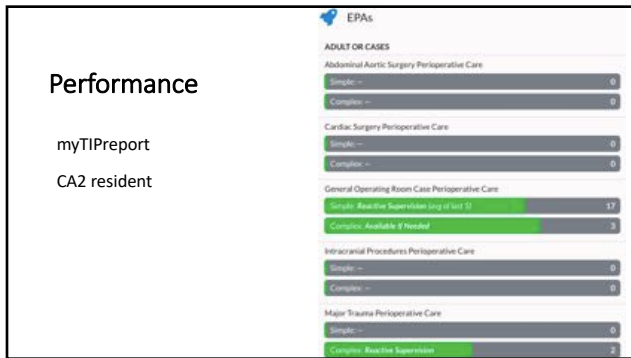
11

Performance

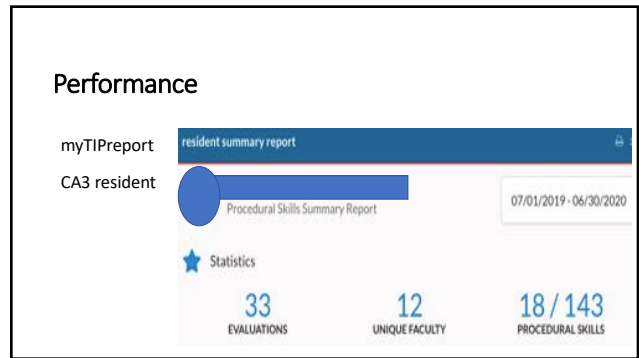
myTIPreport

Faculty rating of resident

12



13



14

Consequences = accountability vs reward

None for pilot phase – educational research only

8 of 78 residents = 0 entries

23 of 78 < 5 entries

Average entries = 8

15

Satisfaction

US/UX – electronic survey questionnaires – rollout, midway, end pilot

Conversations – well received, but . . .

Evidence of use

CCC utility – TBD – need more data

16

Understand the implementation process

CHALLENGES	BARRIERS	SUCCESSSES
large program	dispersed orientation	4 sessions in 2 weeks
	faculty FTE	super-users
5 clinical sites	access to OR	3 out of 5
IT firewalls	connectivity	not yet Duo ?!
survey fatigue	no accountability	self-initiated

17

Questions ? ? ?

mits@saa@iu.edu

18