

# **Perfect Storm Follow-Up Survey (2000 – 2011)**

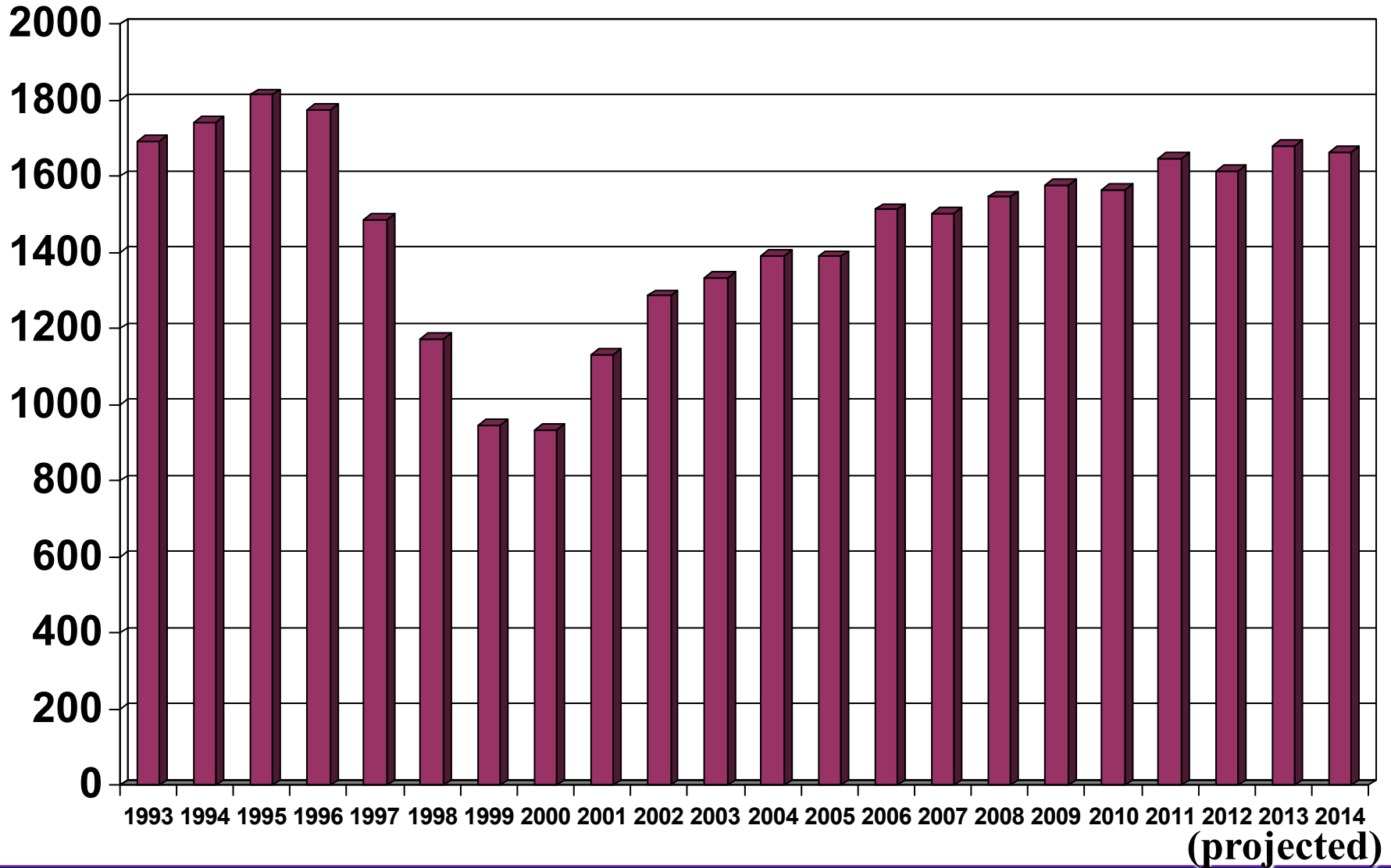
**Kevin K. Tremper, PhD, MD  
Professor and Chair  
Department of Anesthesiology  
University of Michigan**



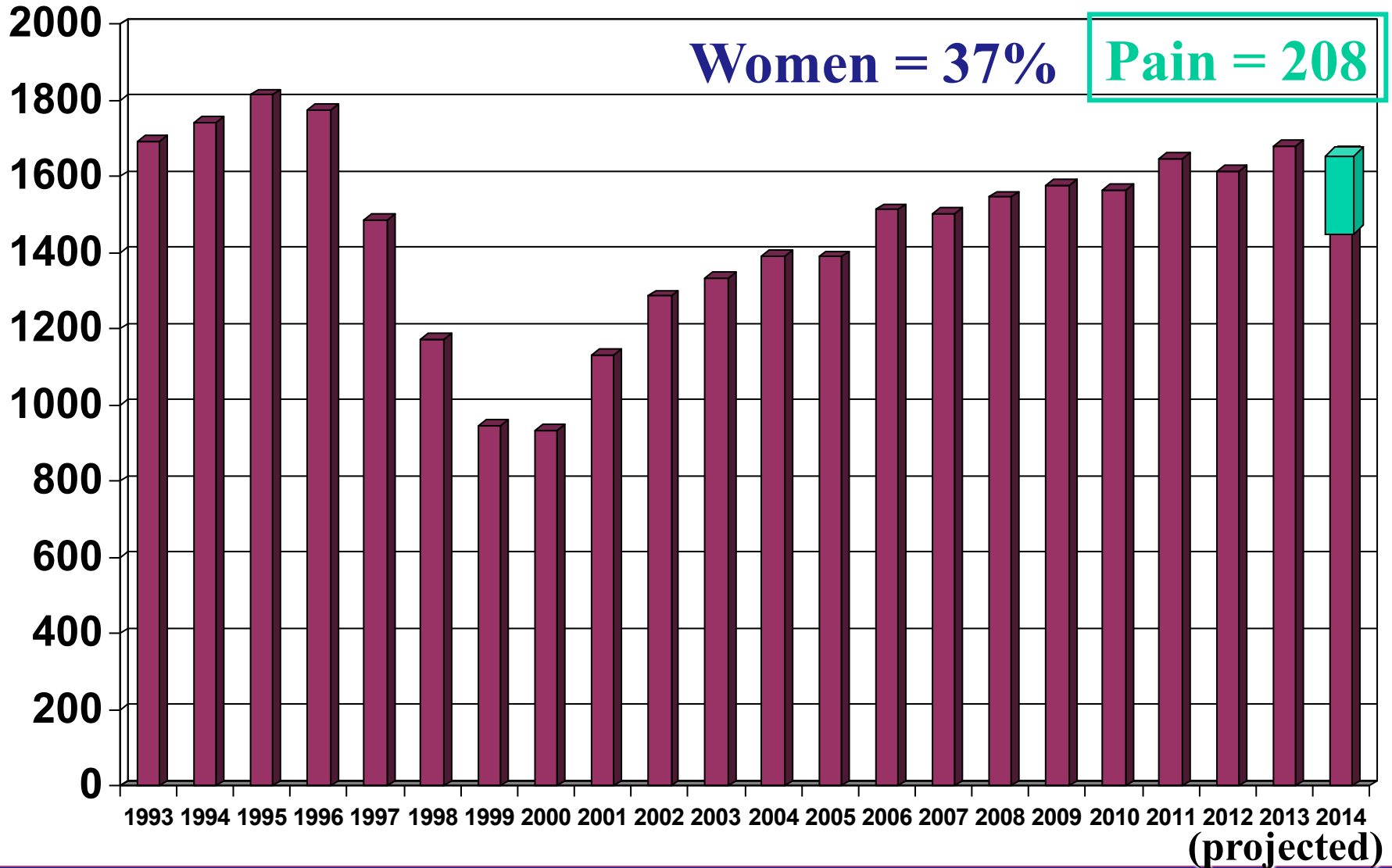
# Match Day 1996



# Resident Graduates 1993 through 2014



# Resident Graduates 1993 through 2014



# Survey Response Rate

2000	2001	2002	2003	2004	2005	2006	2007	2008	2009	2010	2011
58%	72%	64%	65%	73%	60%	61%	60%	59%	60%	62%	62%

# Thanks to 62% of you !

2000	2001	2002	2003	2004	2005	2006	2007	2008	2009	2010	2011
58%	72%	64%	65%	73%	60%	61%	60%	59%	60%	62%	62%

# **“Average” Department (2010/2011)**

<b>Faculty</b>	<b>56.8 FTE</b>
<b>Residents</b>	<b>14/Class</b>
<b>Interns</b>	<b>79% have 10.5 interns</b>
<b>CRNAs</b>	<b>100% have 39.2 CRNAs</b>

# “Average” Department Clinical Coverage

- ORs = 39.6

- Offsites = 9.5

- OB = 1.3

- ICU = 1.8

- APS = 1.1

- Pain = 2.4

- Preop = 1.0

56.7

$$\frac{\text{Faculty}}{\text{Sites}} = \frac{56.8}{56.7} = 1.00$$

$$\frac{\text{Res\&CRNA}}{\text{Sites}} = \frac{90.0}{56.7} = 1.59$$

# Average Job Openings for Faculty/Department

Year	2000	2001	2002	2003	2004	2005	2010	2011	2010	2011
# Openings/ Department	3.8	3.9	3.4	3.8	2.7	2.8	<b>3.4</b>	<b>3.6</b>	<b>3.4</b>	<b>3.6</b>
% Faculty/ Department	9.7 %	8.7 %	6.8 %	7.3%	5.9%	5.5%	<b>6%</b>	<b>6.3%</b>	<b>6%</b>	<b>6.3%</b>
Estimated Number of Faculty Openings	≈400	≈400	≈400	≈400	≈350	≈350	<b>≈345</b>	<b>≈365</b>	<b>≈345</b>	<b>≈365</b>



# Faculty Openings by Subspecialty

Average Dept. = 56.8 FTE

Average Dept with openings has 3.6 open positions

	Mean	% of Openings
Generalist	1.3	36%
Peds	0.7	19%
Cardiac	0.5	14%
ICU	0.4	11%
Pain	0.3	8%
OB	0.2	6%
Neuro	0.1	3%
Regional	0.1	3%
Ambulatory	0.0	0%

# Faculty Openings by Subspecialty

Average Dept. = 56.8 FTE

Average Dept with openings has 3.6 open positions

	Mean	% of Openings
<b>Generalist</b>	<b>1.3</b>	<b>36%</b>
<b>Peds</b>	<b>0.7</b>	<b>19%</b>
<b>Cardiac</b>	<b>0.5</b>	<b>14%</b>
<b>ICU</b>	<b>0.4</b>	<b>11%</b>
<b>Pain</b>	<b>0.3</b>	<b>8%</b>
<b>OB</b>	<b>0.2</b>	<b>6%</b>
<b>Neuro</b>	<b>0.1</b>	<b>3%</b>
<b>Regional</b>	<b>0.1</b>	<b>3%</b>
<b>Ambulatory</b>	<b>0.0</b>	<b>0%</b>

# CRNAs

## CRNA Open Positions

	2000	2001	2010	2011	2008	2009	2010	2011
Depts. %	66	75	65	63	69	66	65	63
# Needed	4.0	4.4	3.4	3.7	4.3	4.2	3.4	3.7

3.4	3.7
-----	-----

# Faculty Academic Time

2000	2003	2004	2005	2006	2007	2008	2010	2011
31%	13.4%	16%	17%	17.5%	17.5%	17%	15%	16%

**Not an accurate measure**

# Revenue: Sources and Total

	2000	*	2010	2011	2010	2011
Clinical Revenue	\$11,718,925 \$340,404/ FTE (n=78)	-	\$25,438,037 \$443,836/FTE (n=70)	\$25,684,861 \$463,055/FTE (n=68)	\$25,438,037 \$443,836/FTE (n=70)	\$25,684,861 \$463,055/FTE (n=68)
Research Revenue	\$1,038,759 \$23,067/ FTE (n=67)	-	\$1,851,084 \$24,129/FTE (n=70)	\$1,369,842 \$20,226/FTE (n=68)	\$1,851,084 \$24,129/FTE (n=70)	\$1,369,842 \$20,226/FTE (n=68)
Institut. Support	\$1,235,000 \$34,300/ FTE (n=77)	-	\$8,652,268 \$166,759/FTE (n=70)	\$8,699,762 \$174,096/FTE (n=68)	\$8,652,268 \$166,759/FTE (n=70)	\$8,699,762 \$174,096/FTE (n=68)
Total Revenue	\$14,682,989 \$424,300/ FTE (n=79)	-	\$36,822,613 \$648,830/FTE (n=70)	\$36,387,210 \$666,025/FTE (n=68)	\$36,822,613 \$648,830/FTE (n=70)	\$36,387,210 \$666,025/FTE (n=68)
Total Expense	\$13,768,981 \$387,512/ FTE (n=79)	-	\$36,527,333 \$642,351/FTE (n=69)	\$35,922,756 \$652,433/FTE (n=68)	\$36,527,333 \$642,351/FTE (n=69)	\$35,922,756 \$652,433/FTE (n=68)

\* 2001 or 2005 surveys did not ask for these data.

# Margin Analysis FY 2000 - 2011

Dept. Margin	2000	2001	2002	2003	2004	2005
	<b>2010</b>			<b>2011</b>		
(+) Margin/ FTE						
(-) Margin/ FTE						
	<b>25%</b>			<b>35%</b>		
	<b>36,166</b>			<b>36,476</b>		
(+) Margin / FTE	68% 29,400	60% 26,111	53% 29,961	53% 33,236	57% 27,849	54% 43,075
(-) Margin /	23% 39,900	26% 28,778	29% 59,369	24% 26,017	25% 36,166	35% 36,476

# Total Department Support (Hospital, Med School and Other)

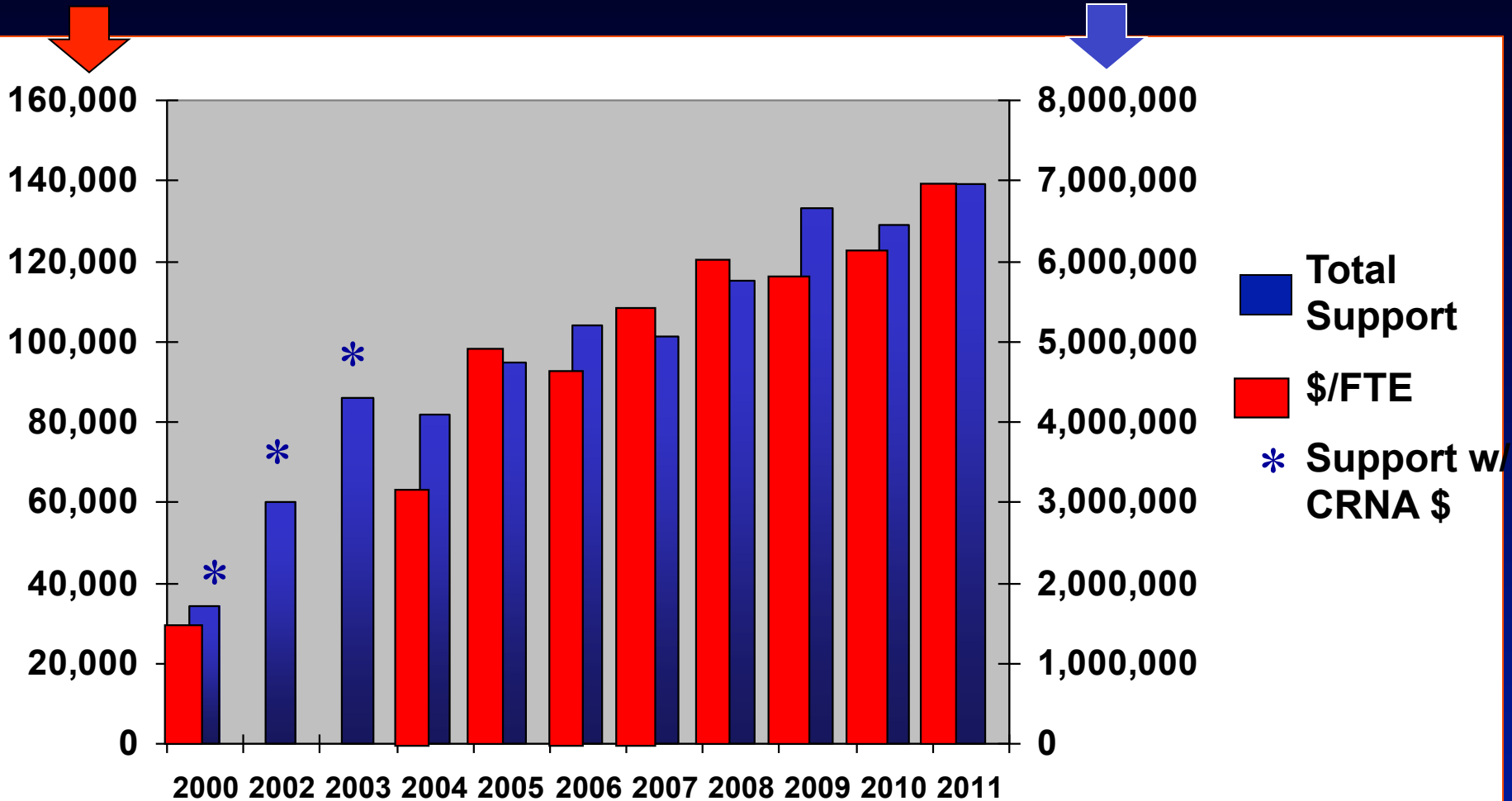
Year	2000	2002	2003	2004	2005	2006
Total Support	1,235,000	<b>2010</b>		<b>2011</b>		5,455,400
\$/FTE	34,000					120,100

Year	2007	<b>8,652,268</b>		<b>8,699,762</b>		<b>2011</b>
Total Support	5,196,268	<b>166,759</b>		<b>174,096</b>		<b>8,699,762</b>
\$/FTE	112,962	146,465	160,381	166,759	174,096	174,096

# Total Department Support Without CRNA Support

	Total Support	Total Support (minus CRNA	Per FTE (minus CRNA
<b>2009</b>	<b>\$5,630,386</b>		<b>\$133,196</b>
<b>2010</b>	<b>\$6,579,848</b>		<b>\$128,619</b>
<b>2011</b>	<b>\$7,008,978</b>		<b><u>\$140,435</u></b>
<b>2010</b>	<b>\$8,652,268</b>	<b>\$6,579,848</b>	<b>\$128,619</b>
<b>2011</b>	<b>\$8,699,762</b>	<b>\$7,008,978</b>	<b>\$140,435</b>

# Total Department Support (without CRNA Support)



# **Institutional Support 2011**

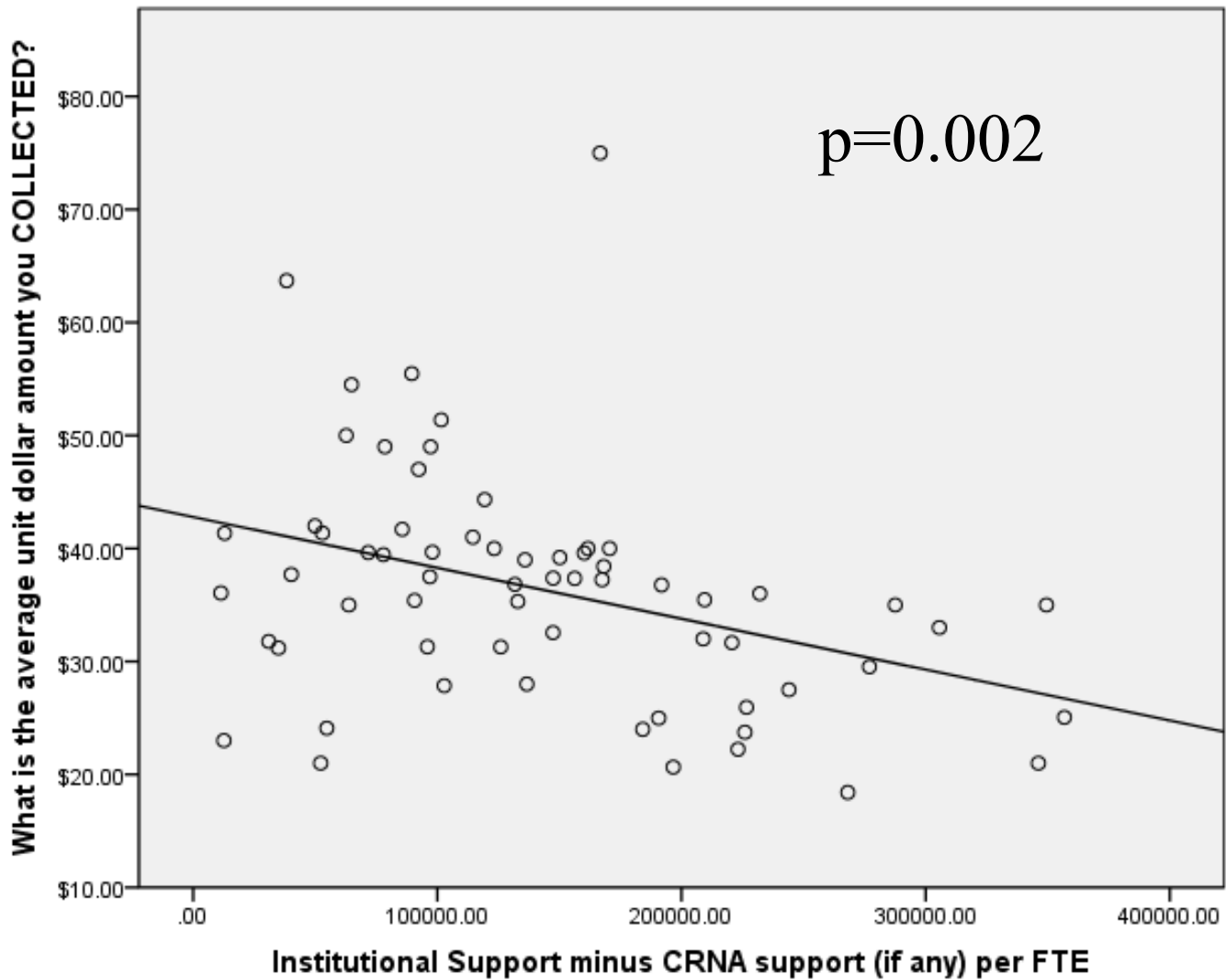
**Total support / FTE = \$174,096**

**(Support – CRNA)/FTE = \$140,435**

**Support/site = \$134,934**

**Median Margin = \$ 190,779 or  
\$ 3,359/FTE**

# Support/faculty vs \$/unit



# SAAA Salary Survey

## National Average (50th %)

	2000	2010	2011	2007	2008	2009	2010	2011
INST	144,250	<b>281,500</b>	<b>269,000</b>	256,182	259,500	271,146	281,500	269,000
ASST	183,000	<b>305,250</b>	<b>306,145</b>	273,920	288,000	299,203	305,250	306,145
ASSC	210,000	<b>337,000</b>	<b>334,289</b>	300,781	315,679	328,725	337,000	334,289
PROF	239,182	<b>350,305</b>	<b>348,550</b>	311,163	323,600	339,209	350,305	348,550

# SAAA Salary Drop 3 out of 4

	2000	2010	2011	2007	2008	2009	2010	2011
INST	144,250	<b>281,500</b>	<b>269,000</b>	256,182	<b>259,500</b>	<b>271,146</b>	<b>281,500</b>	<b>269,000</b>
ASST	183,000	<b>305,250</b>	<b>306,145</b>	273,920	<b>288,000</b>	<b>299,203</b>	<b>305,250</b>	<b>306,145</b>
ASSC	210,000	<b>337,000</b>	<b>334,289</b>	300,781	<b>315,679</b>	<b>328,725</b>	<b>337,000</b>	<b>334,289</b>
PROF	239,182	<b>350,305</b>	<b>348,550</b>	311,163	<b>323,600</b>	<b>339,209</b>	<b>350,305</b>	<b>348,550</b>

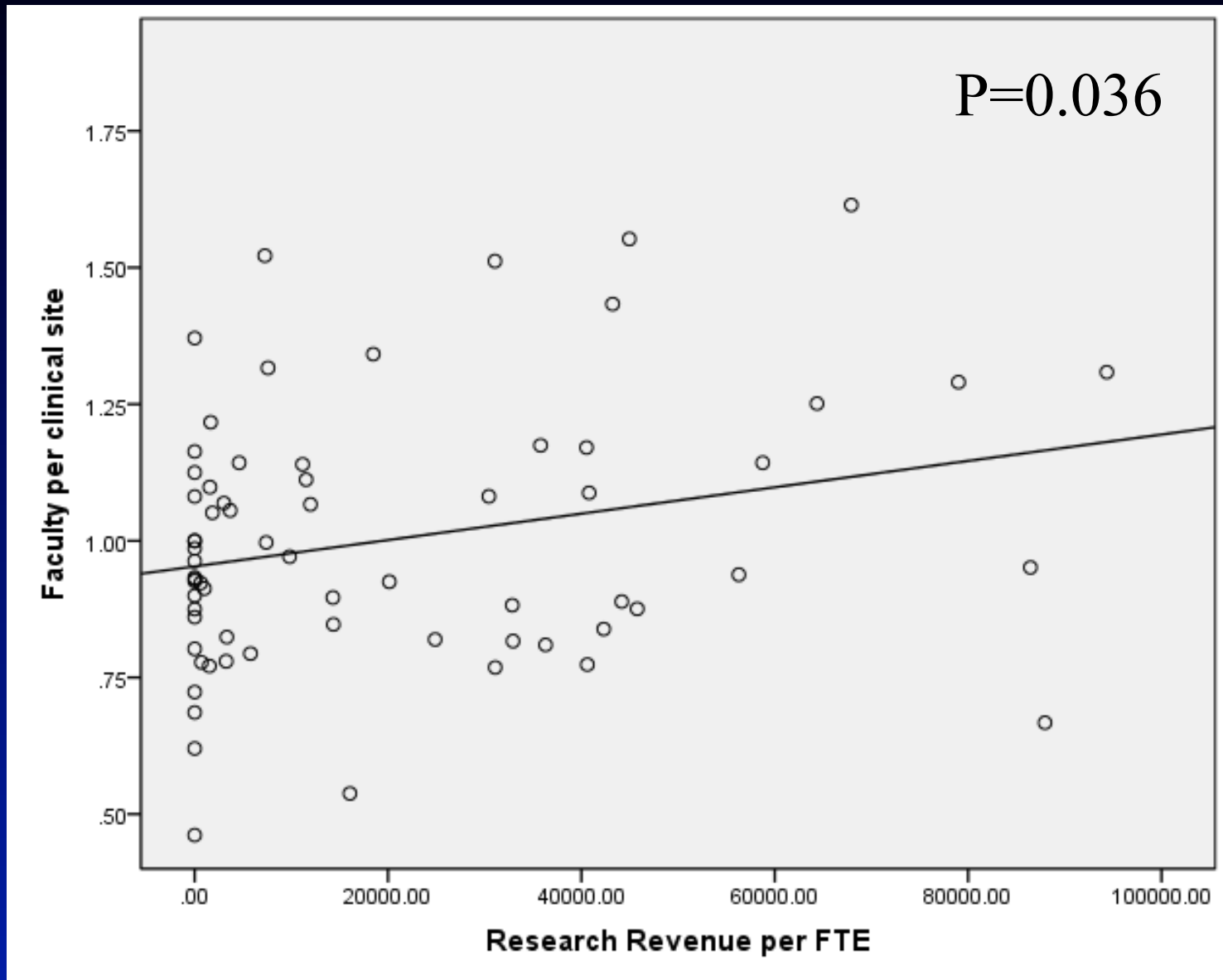
# Clinical Sites and Faculty Assigned

Clinical Anesthetizing Locations	MEAN	MAX	MIN	SD
ORs	39.6	155	16	20.2

Faculty/ Clinical Sites	1.0	1.6	0.5
Research Revenue/ Faculty	\$20,226	\$94,340	\$0

Faculty/Clinical Sites	1.0	1.6	0.5	0.2
Research Revenue/ Faculty	\$20,226	\$94,340	\$0	\$25,337

# Faculty/Sites vs Research \$/FTE



# Subspecialty Compensation (Only 36% pay more)

	Mean	Min.	Max.
<b>Cardiac</b>	<b>\$17,280</b>	<b>\$ 0</b>	<b>\$75,000</b>
<b>ICU</b>	<b>\$ 7,800</b>	<b>\$ 0</b>	<b>\$50,000</b>
<b>Peds</b>	<b>\$16,140</b>	<b>\$ 0</b>	<b>\$45,000</b>
<b>Pain</b>	<b>\$13,020</b>	<b>\$ 0</b>	<b>\$125,000</b>
<b>OB</b>	<b>\$ 2,917</b>	<b>\$ 0</b>	<b>\$30,000</b>
<b>Neuro</b>	<b>\$ 2,800</b>	<b>\$ 0</b>	<b>\$30,000</b>
<b>Other</b>	<b>\$ 6,307</b>	<b>\$ 0</b>	<b>\$88,933</b>

# Unit Value Charge (\$)

2000	2001	2002	2003	2004	2010	2011	2009	2010	2011
62.60	65.90	--	74.48	75.96	99.48	105.76	7.80	99.48	105.76
Collection \$/unit					35.42	35.99	35.90	35.42	35.99

# Units Billed per Faculty

2004	2005	2006	2007	2008	2009	2010	2011
11,954	11,320	12,193	12,124	11,179	10,720	11,199	10,951

# Medicaid Reimbursement/ Unit

	2005	2006	2007	2008	2009	2010	2011
Max	\$30.00	\$32.00	\$37.00	\$31.50	\$38.00	\$38.00	\$40.00
Min	\$ 5.00	\$ 8.00	\$ 8.00	\$ 8.00	\$6.00	\$8.00	\$8.00
Mean	\$14.98	\$16.67	\$16.07	\$16.21	\$17.17	\$17.26	\$16.17

# Late Pay

No	30%
Yes	70%
<i>If yes,</i>	
How much \$/hr.	<b>\$149.00/hr</b> $\pm$ \$29.00
How much Time	<b>4:50 pm</b> $\pm$ 41 min.

# Conclusions:

1. Faculty openings the same/Up ?
2. Department finances are same/ not improving!
3. Faculty salaries are **decreasing** ?
4. Departments' institutional support is **still increasing**.
5. Support is due to poor collection rate ... Not academic time or site/ faculty utilization.

# Conclusions:

- 6. More faculty/site associated with Increased Research \$\$**
- 7. Overtime pay average \$149/hr starting at 4:50 pm.**
- 8. AIMS: 79% have/will have in 12 mo.**
- 9. AIMS & Liability: 9 cases (8 sites)**
  - 3 Beneficial**
  - 0 Detrimental**
  - 2 Neither B or D**

# Publications

1. *Financial Environment of Academic Anesthesia. Advances in Anesthesia, Mosby, Inc., Chapter 1, vol 19, pp. 1-35, 2001.*
2. *A Demographic, Service, and Financial Survey of Anesthesia Training Programs in the United States. Anesth Analg 2003; 96:1432-46.*
3. *Faculty and Finances of United States Anesthesiology Training Programs: 2002-2003. Anesth Analg 2004; 99:1185-92.*
4. *Trends in Financial Status of United States Anesthesiology Training Programs: 2000 to 2004. Anesth Analg 2006; 102:517-23.*
5. *Five-Year Follow-Up on the Work Force and Finances of United States Anesthesiology Training Programs: 2000 to 2005. Anesth Analg 2007; 104:863-68.*
6. *Six-Year Follow-Up on Work Force and Finances of the United States Anesthesiology Training Programs: 2000 to 2006. Anesth Analg, 2009; 108:263-272.*
7. *Seventh and Eighth Year Follow-Up on Workforce and Finances of the United States Anesthesiology Training Programs: 2007 and 2008. Anesth Analg, 2009; 109:897-899.*
8. *Workforce and Finances of the United States Anesthesiology Training Programs: 2009-2010. Anesth Analg, 2011; 112:1480-1486.*