

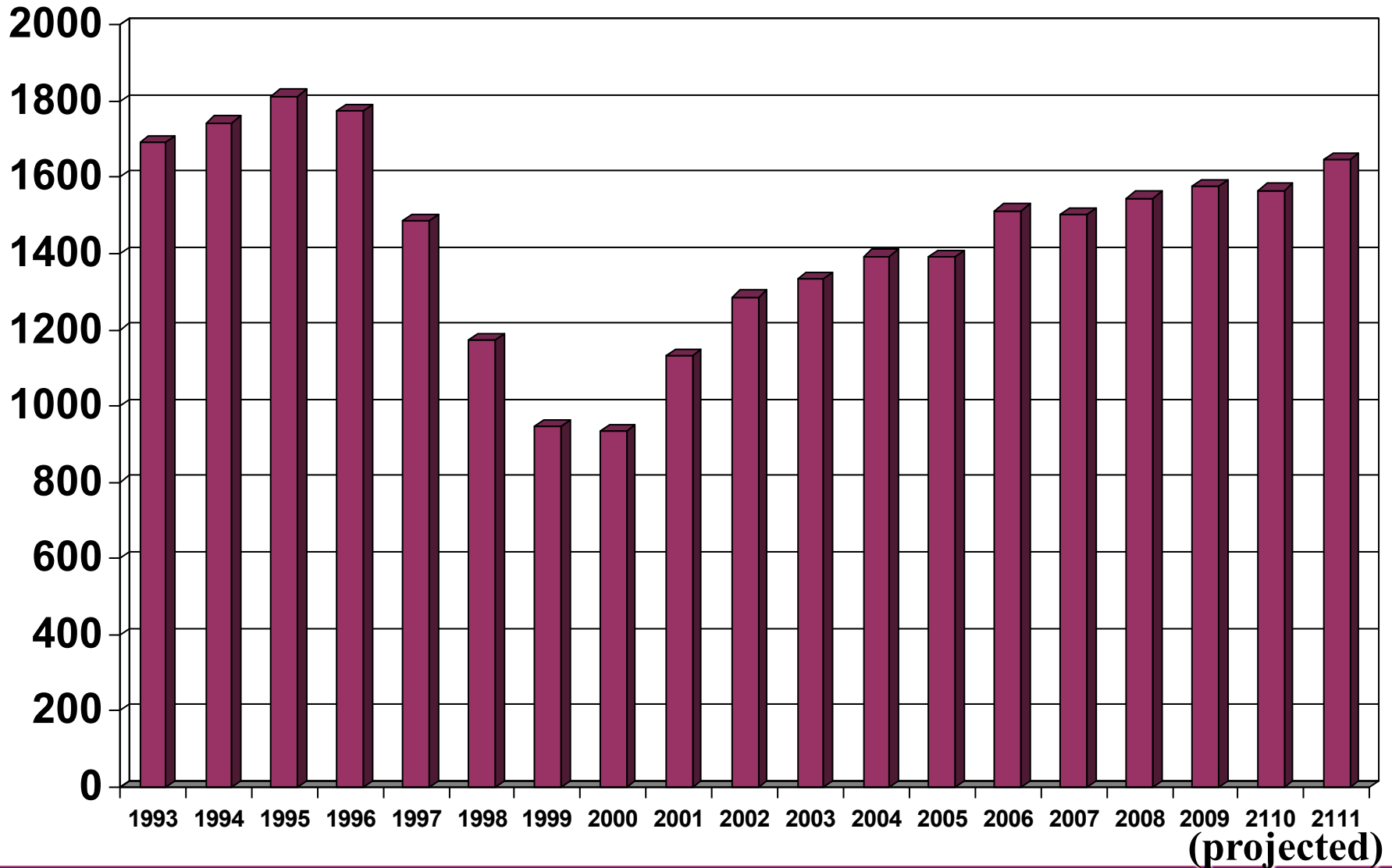
# **Perfect Storm Follow-Up Survey (2000 – 2007/8)**

**Kevin K. Tremper, PhD, MD  
Robert B. Sweet Professor and Chair  
Department of Anesthesiology  
University of Michigan**



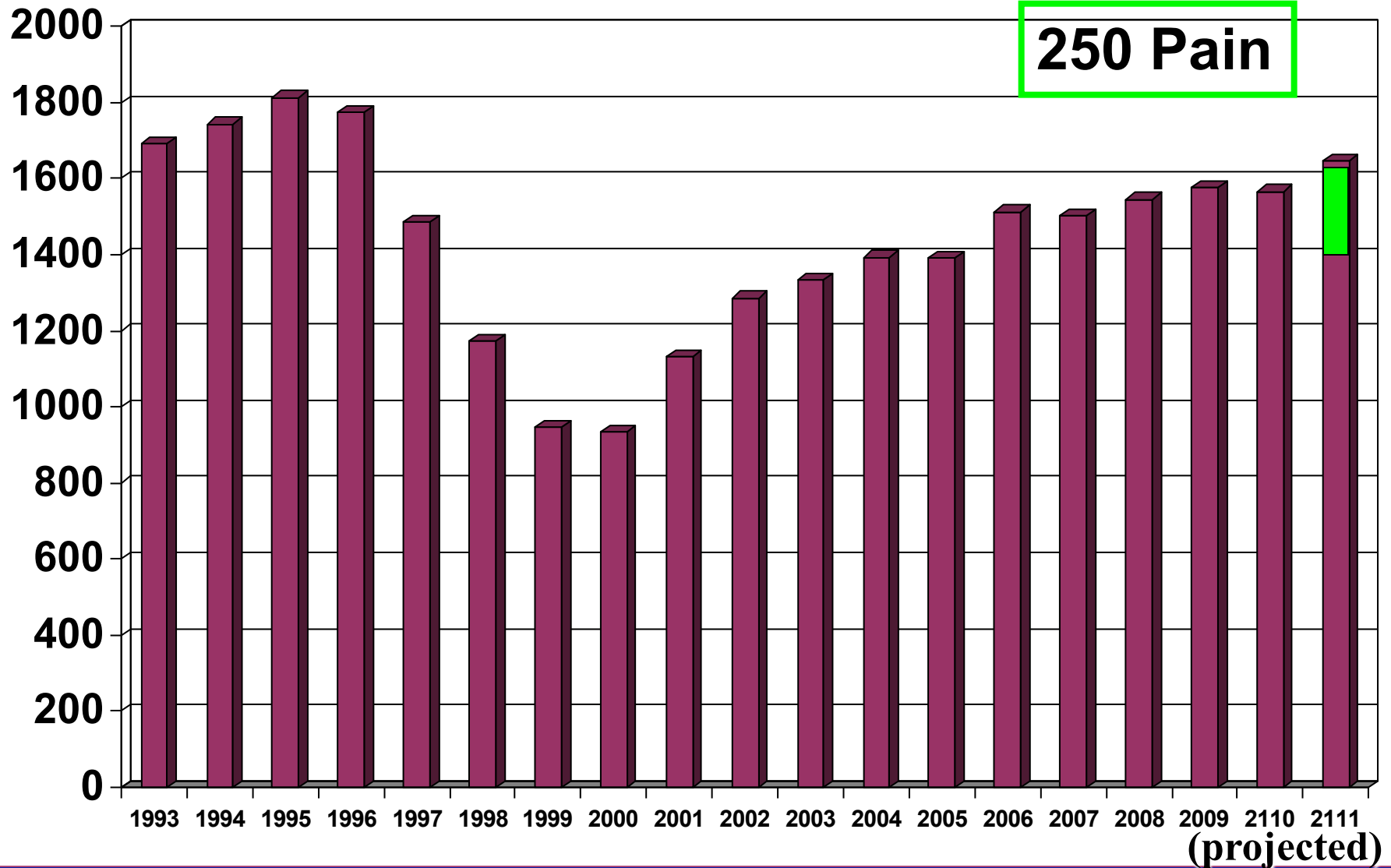
# Resident Graduates

## 1993 through 2011: AMG $\approx$ 86%



# Resident Graduates

## 1993 through 2011: AMG $\approx$ 86%



# Survey Response Rate

2000	2001	2002	2003	2004	2005	2006	2007	2008
58%	72%	64%	65%	73%	60%	61%	60%	59%*

**\* Need More Respondents**

# **“Average” Department (2007/2008)**

<b>Faculty</b>	<b>53 FTE</b>
<b>Residents</b>	<b>15/Class</b>
<b>Interns</b>	<b>68% have 10 interns</b>
<b>CRNAs</b>	<b>96% have 33 CRNAs</b>

# “Average” Department Clinical Coverage

- ORs = 40

- Offsites = 7

- OB = 1.4

- ICU = 1.6

- APS = 1.1

- Pain = 1.9

- Preop = 1.0

54.0

$$\frac{\text{Faculty}}{\text{Sites}} = \frac{53.1}{54.0} = 0.98$$

$$\frac{\text{Res/CRNA}}{\text{Sites}} = \frac{77.9}{54.0} = 1.4$$

# Average Job Openings for Faculty/Department

Year	2000	2001	2002	2003	2004	2005	2006	2007	<b>2008</b>
# Openings/ Department	3.8	3.9	3.4	3.8	2.7	2.8	2.5	3.7	<b>3.7</b>
% Faculty/ Department	9.7%	8.7%	6.8%	7.3%	5.9%	5.5%	5.0%	7%	<b>7%</b>
Estimated Number of Faculty Openings	≈400	≈400	≈400	≈400	≈350	≈350	≈300	≈350	≈350

# Faculty Openings by Subspecialty

Average Dept. = 53.1 FTE

Average Dept has 3.7 open positions

	Mean	% of Openings
Generalist	1.5	31%
Cardiac	0.6	13%
Peds	1.0	21%
Pain	0.3	6%
ICU	0.5	10%
OB	0.2	4%
Neuro	0.2	4%
Regional	0.3	6%
Ambulatory	0.2	4%

# Faculty Openings by Subspecialty

Average Dept. = 53.1 FTE

Average Dept has 3.7 open positions

	Mean	% of Openings
Generalist	1.5	31%
Cardiac	0.6	13%
Peds	1.0	21%
Pain	0.3	6%
ICU	0.5	10%
OB	0.2	4%
Neuro	0.2	4%
Regional	0.3	6%
Ambulatory	0.2	4%

# CRNAs

## CRNA Open Positions

	2000	2001	2002	2003	2004	2005	2006	2007	<b>2008</b>
Depts.%	66	75	67	69	91	89	67	79	<b>69</b>
# Needed	4.0	4.4	3.6	3.9	3.1	3.6	4.3	4.4	<b>4.3</b>

# Faculty Academic Time

2000	2003	2004	2005	2006	2007	<b>2008</b>
31%	13.4%	16%	17%	17.5%	17.5%	<b>17%</b>

# Faculty Academic Time

2000	2003	2004	2005	2006	2007	<b>2008</b>
31%	13.4%	16%	17%	17.5%	17.5%	<b>17%</b>

**Not an accurate measure**

# Revenue: Sources and Total

	2000	*	2002	*	2004	2005	2006	2007	2008
<b>Clinical Revenue</b>	\$11,718,925 \$340,404/FTE (n=78)	-	-	-	-	\$16,644,922 \$373,150/FTE (n=64)	\$20,408,158 \$402,046/FTE (n=70)	\$19,044,688 \$414,015/FTE (n= 71)	\$23,698,230 \$443,392/FTE (n=70)
<b>Research Revenue</b>	\$1,038,759 \$23,067/FTE (n=67)	-	-	-	-	\$1,408,000 \$23,832/FTE (n=64)	\$1,869,562 \$35,534/FTE (n=58)	\$1,802,606 \$39,187/FTE (n= 71)	\$1,909,715 \$27,869/FTE (n=70)
<b>Institution Support</b>	\$1,235,000 \$34,300/FTE (n=77)	-	\$2,330,000 \$60,000/FTE (n=46)	-	\$3,788,000 \$98,000/FTE (n=85)	\$4,900,000 \$116,000/FTE (n=60)	\$5,455,400 \$120,200/FTE (n=71)	\$5,196,262 \$112,962/FTE (n = 70)	\$6,833,070 \$146,465/FTE (n=69)
<b>Total Revenue</b>	\$14,682,989 \$424,300/FTE (n=79)	-	-	-	-	\$21,998,396 \$489,297/FTE (n=65)	\$27,631,460 \$547,879/FTE (n=68)	\$25,996,792 \$566,183/FTE (n=70)	\$32,472,849 \$616,477/FTE (n=69)
<b>Total Expenses</b>	\$13,768,981 \$387,512/FTE (n=79)	-	-	-	-	\$21,703,829 \$486,139/FTE (n=62)	\$27,319,695 \$534,821/FTE (n=66)	\$25,815,321 \$554,660/FTE (n=69)	\$30,394,392 \$562,980/FTE (n=70)

\* 2001 or 2003 surveys did not ask for these data.

# Margin Analysis FY 2000 - 2008

Dept. Margin	2000	2001	2002	2003	2004
(+) Margin/ FTE	53% 50,500	53% 15,200	65% 28,400	54% 17,800	55% 27,400
(-) Margin/ FTE	44% 23,800	38% 21,500	33% 40,400	42% 42,700	42% 35,500

Dept. Margin	2005	2006	2007	2008
(+) Margin/ FTE	50% 37,100	68% 29,400	60% 26,111	53% 29,961
(-) Margin/ FTE	40% 49,900	23% 39,900	26% 28,778	29% 59,369

# Total Department Support (Hospital, Med School and Other)

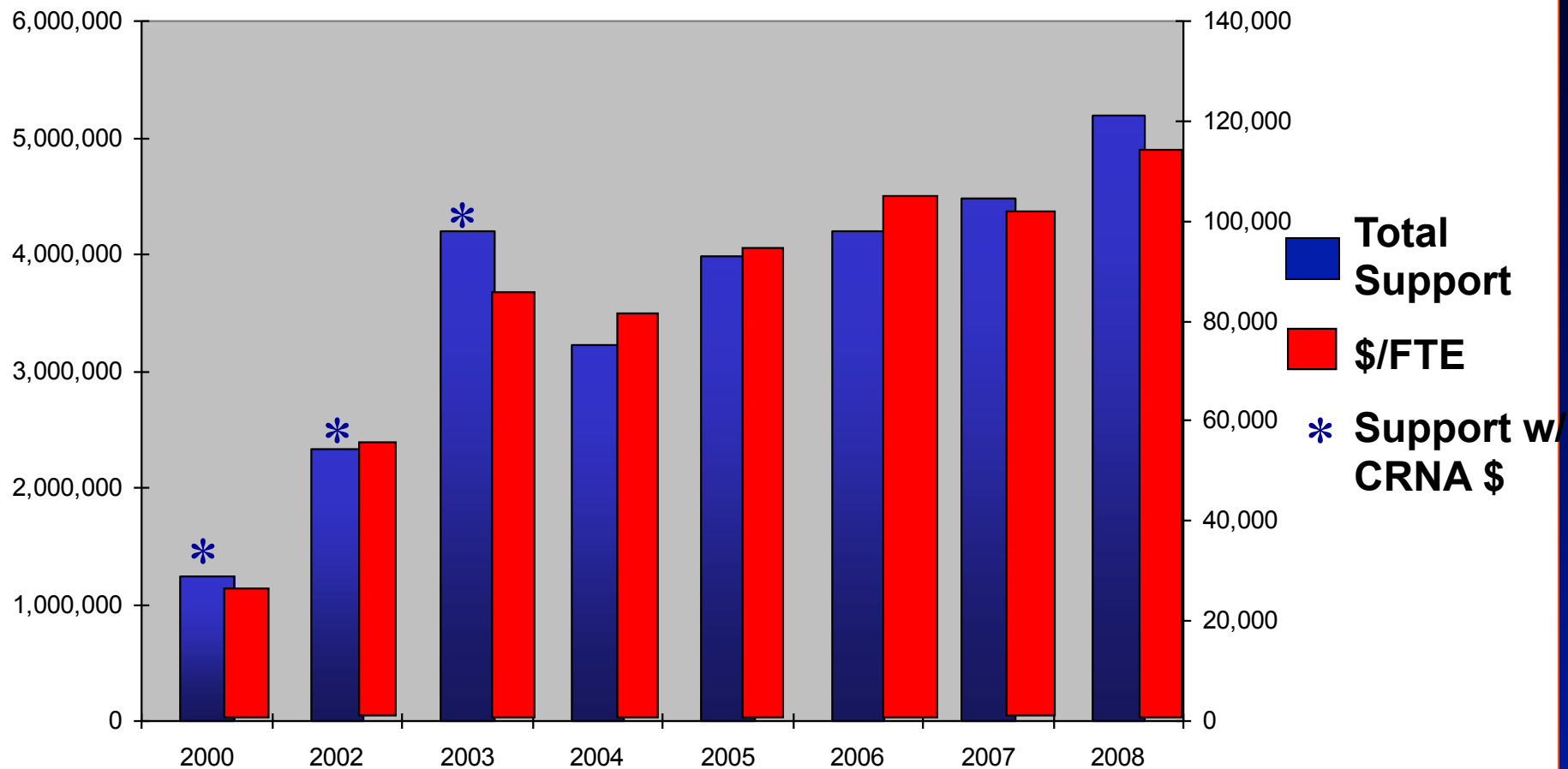
<b>Year</b>	<b>2000</b>	<b>2002</b>	<b>2003</b>	<b>2004</b>
<b>Total Support</b>	<b>1,235,000</b>	<b>2,330,000</b>	<b>4,202,000</b>	<b>3,788,000</b>
<b>\$/FTE</b>	<b>34,000</b>	<b>59,900</b>	<b>86,000</b>	<b>98,000</b>

<b>Year</b>	<b>2005</b>	<b>2006</b>	<b>2007</b>	<b>2008</b>
<b>Total Support</b>	<b>4,900,000</b>	<b>5,455,400</b>	<b>5,196,263</b>	<b>6,833,070</b>
<b>\$/FTE</b>	<b>116,000</b>	<b>120,100</b>	<b>112,962</b>	<b>146,465</b>

# Total Department Support Without CRNA Support

	Total Support	Total Support (minus CRNA support)	Per FTE (minus CRNA support)
<b>2004</b>	<b>\$3,788,000</b>	<b>\$3,210,000</b>	<b>\$82,000</b>
<b>2005</b>	<b>\$4,900,000</b>	<b>\$4,100,000</b>	<b>\$95,000</b>
<b>2006</b>	<b>\$5,455,000</b>	<b>\$4,200,000</b>	<b>\$104,200</b>
<b>2007</b>	<b>\$5,196,000</b>	<b>\$4,207,000</b>	<b>\$101,500</b>
<b>2008</b>	<b>\$6,833,070</b>	<b>\$5,183,302</b>	<b>\$115,343</b>

# Total Department Support (without CRNA Support)



# **Institutional Support 2008**

**Total support / FTE = \$146,465**

**(Support – CRNA)/FTE = \$115,343**

**Support/site = \$126,538**

**Average Margin =       \$- 425,312 or  
                                  \$- 1,568/faculty**

# Institutional Support 2008

Total support / FTE = \$146,465

(Support – CRNA)/FTE = **\$115,343**

Support/site = \$126,538

Average Margin = **\$- 425,312 or**  
**\$- 1,568/faculty**

# SAAC Salary Survey

## National Average (50th %)

	2000	2001	2002	2003	2004	2005	2006	2007	2008
<b>INST</b>	144,250	166,000	201,528	209,794	216,122	230,500	226,443	256,182	259,500
<b>ASST</b>	183,000	195,859	209,000	226,004	242,821	251,684	266,660	273,920	288,000
<b>ASSC</b>	210,000	225,188	231,496	247,000	264,158	274,218	284,360	300,781	315,679
<b>PROF</b>	239,182	247,250	242,156	258,638	278,712	279,850	297,500	311,163	323,600

# Subspecialty Compensation (Only 46% pay more)

	Mean	Min.	Max.
<b>Cardiac</b>	<b>\$19,061</b>	<b>\$ 0</b>	<b>\$61,000</b>
<b>ICU</b>	<b>\$ 7,065</b>	<b>\$ 0</b>	<b>\$32,000</b>
<b>Peds</b>	<b>\$15,145</b>	<b>\$ 0</b>	<b>\$50,000</b>
<b>Pain</b>	<b>\$10,877</b>	<b>\$ 0</b>	<b>\$50,000</b>
<b>OB</b>	<b>\$ 3,467</b>	<b>\$ 0</b>	<b>\$25,000</b>
<b>Neuro</b>	<b>\$ 3,484</b>	<b>\$ 0</b>	<b>\$38,000</b>
<b>Other</b>	<b>\$ 4,306</b>	<b>\$ 0</b>	<b>\$51,000</b>

# Unit Value Charge (\$)

2000	2001	2002	2003	2004	2005	2006	2007	2008
62.60	65.90	--	74.48	75.96	81.54	85.50	88.69	95.95
Collection \$/unit					31.00	31.30	32.42	34.74

# Units Billed per Faculty

2004	2005	2006	2007	2008
11,954	11,320	12,193	12,124	11,179

# Medicaid Reimbursement/ Unit

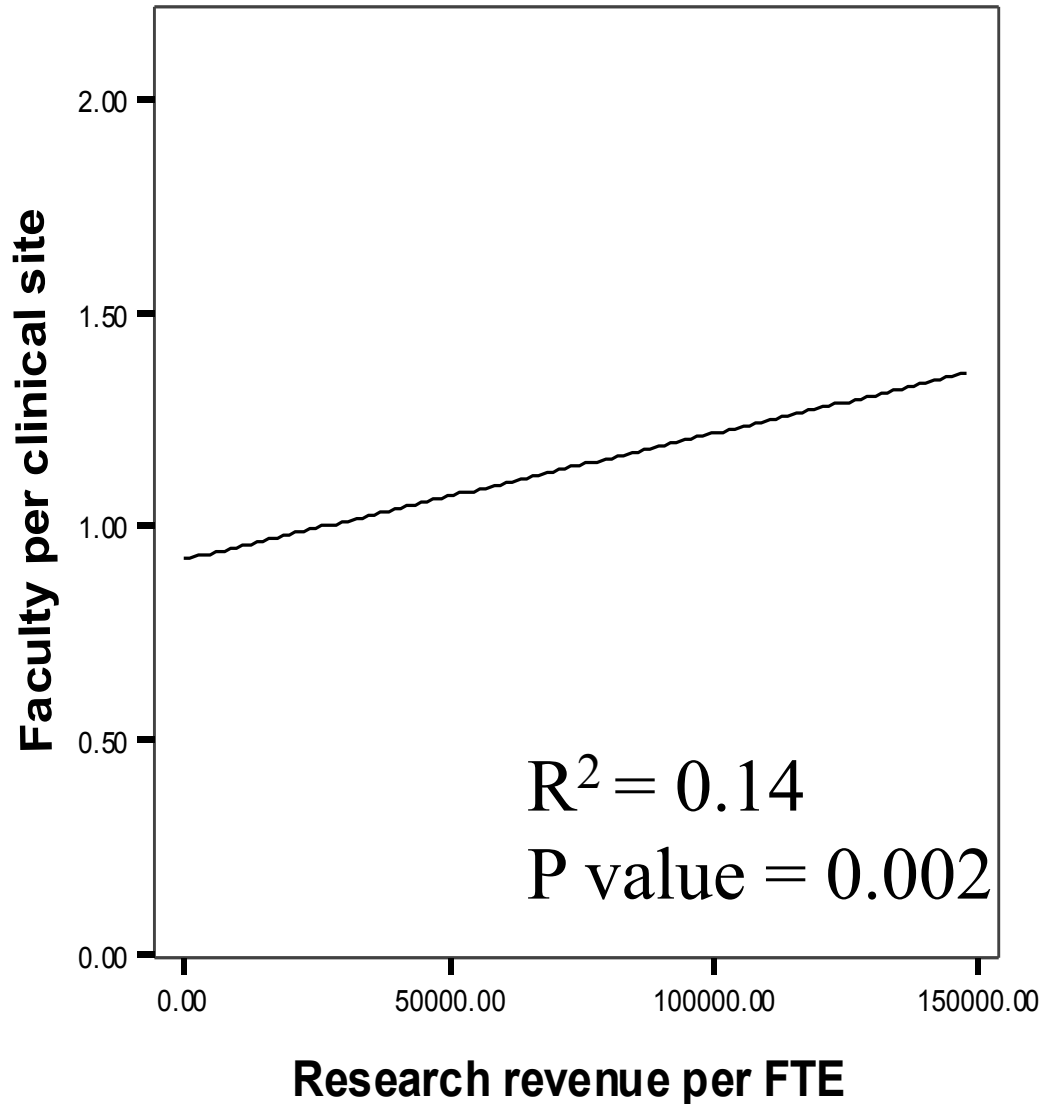
	2005	2006	2007	2008
Max	\$30.00	\$32.00	\$37.00	\$31.50
Min	\$ 5.00	\$ 8.00	\$ 8.00	\$ 8.00
Mean	\$14.98	\$16.67	\$16.07	\$16.21

# Clinical Sites and Faculty Assigned

Clinical Anesthetizing Locations	MEAN	MAX	MIN	SD
<b>ORs</b>	<b>40</b>	<b>204</b>	<b>7</b>	<b>29.1</b>
<b>Non OR Sites</b>	<b>7</b>	<b>40</b>	<b>1</b>	<b>6.7</b>
Faculty Assigned/Day				

<b>Faculty/ Clinical Sites</b>	<b>0.98</b>	<b>2.1</b>	<b>0.08</b>
<b>Research Revenue/ Faculty</b>	<b>\$27,869</b>	<b>\$147,500</b>	<b>\$0</b>

# Faculty/Sites vs Research \$/FTE



# Determining Support Required

$$\frac{\text{Expenses/yr.}}{\text{Units Billed/yr.}} = \$ \quad X \quad \text{Exps/Unit}$$

$$\text{Avg \$ collected/unit} = \$ \underline{\quad Y \quad}$$

$$\text{\$ needed \$/unit} = \$ \underline{\hspace{2cm}}$$

$$\text{\$ needed/FTE} = \$ \underline{\hspace{2cm}}$$

# “Average” Department

53.1 Faculty

11,179 units/faculty

Total Expense	<u>\$30,394,392</u>	= \$50.48/unit (needed)
Total Units	602,080	

\$/unit needed      \$50.48

\$/unit collected      \$34.74

\$/unit support      \$15.74/unit

Support  $\$15.74 \times 602,080 = \$9,476,739$   
or \$178,470/faculty

# Conclusions:

1. Faculty openings the same ?
2. Department finances are not improving!
3. Faculty salaries are increasing.
4. Departments' institutional support is still increasing.
5. Support is due to poor collection rate ... Not academic time or site/faculty utilization.

# Conclusions:

6. More faculty/site associated with Increased Research \$\$
7. Faculty academic time may be increasing slightly ?? Not Accurate?

# Publications

- 1. *Financial Environment of Academic Anesthesia. Advances in Anesthesia, Mosby, Inc., Chapter 1, vol 19, pp. 1-35, 2001.***
- 2. *A Demographic, Service, and Financial Survey of Anesthesia Training Programs in the United States. Anesth Analg 2003; 96:1432-46.***
- 3. *Faculty and Finances of United States Anesthesiology Training Programs: 2002-2003. Anesth Analg 2004; 99:1185-92.***
- 4. *Trends in Financial Status of United States Anesthesiology Training Programs: 2000 to 2004. Anesth Analg 2006; 102:517-23.***
- 5. *Five-Year Follow-Up on the Work Force and Finances of United States Anesthesiology Training Programs: 2000 to 2005. Anesth Analg 2007; 104:863-68.***
- 6. *Six-Year Follow-Up on Work Force and Finances of the United States Anesthesiology Training Programs: 2000 to 2006. In Press, 2008.***